

Presetting

Shrinking

Balancing

Testing / measuring

Accessories

Service

Maximum precision & productivity for your production

Tool presetting



DMG MORI Microset

Perfect
measurement results
for all requirements.



Competence

Precision and productivity in production.

Whether it is presetting, shrinking, balancing or testing and measuring – we offer you perfect solutions for all tool sizes and machine environments. Improve the quality and precision of your workpieces with our know-how and wide range of products.



The right solution for every requirement.

Tailored solutions for maximum productivity – from the selection of suitable technologies to service including training, maintenance and updates.

Presetting



Universal solution: UNO



Premium solution: VIO

Shrinking / balancing



Power Clamp



VIO tool *dynamic*

Testing / measuring



Equator 300

Accessories



Adapters and spindles

Service



Maintenance, support,
24/7 Service Hotline and training

Tool presetting

NEW // UNO – from manual to fully automatic.

Tool presetting at a high level at an attractive price. The UNO works exceptionally accurately and offers perfect results for tool dimensions with a diameter of up to 400 mm and measuring lengths of up to 400 mm (optional: 700 mm). This is ensured by a thermo-stable construction, high quality measuring systems and high-performance software.

04



UNO 20|40 manual

- + Intuitive menu navigation and control system
- + Diverse measurement functions for turn-mill and drilling tools
- + SK 50-HSK spindle, VDI, Capto and other adapters available

UNO 20|40 autofocus

Additional features compared to the UNO manual

- + Automatic focusing on the cutting edge to be measured
- + Best suited for tools with multiple cutting edges
- + SK 50 spindle with automatic focus
- + Can be operated manually



UNO 20|70 automatic drive

Additional features compared to the UNO autofocus

- + Automatic positioning and focusing on the cutting edges to be measured
- + Automatic measurement even of complex tools
- + No special user expertise required

Highlights

- + New design, improved ergonomics
- + FEM-optimised and thermally stable cast iron construction
- + Individual design through modular concept
- + Tool measurement based on the snap gauge principle for diameters of up to 100 mm
- + 47 cm (18.5") screen with 16:9 format with 45-fold magnification
- + Incident light for visual cutter inspection

Options

- + 22" / 23" multi-touch display
- + Pneumatic spindle indexing 4 x 90°
- + Pneumatic spindle brakes
- + Second camera for setting up the centre of rotation
- + Release-by-touch operation
- + Useful system cabinet
- + Adapter / tool tray
- + High-quality adapters
- + Thermal label printer
- + Tool identification with RFID data carrier
- + Post processors for all common control systems

UNO series – new autofocus and automatic drive features

UNO autofocus and UNO automatic drive – efficient and precise.

The autofocus and automatic drive configurations of the UNO series provide decisive advantages for tool measurement at the highest level. Choose your machine – to meet your requirements.



autofocus

For automatically focusing the cutting edge. Motor-driven spindles. With useful system cabinet and 22" touch display as standard.

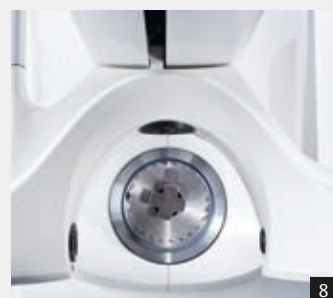


automatic drive

For fully automatic tool presetting and measurement independent of the operator (CNC-controlled, 3 axes). With useful system cabinet and 22" touch display as standard.

Maximum convenience and functionality for the operator.

In addition to precision, speed and reliability, the UNO series also boasts numerous features in terms of its equipment. The new design and improved ergonomics set new standards.



1: Camera system for setting the centre of rotation 2: Tactile measurement of the centre of rotation 3: Release-by-touch function, easy to operate without buttons 4: Useful system cabinet with 3 drawers, 1 door and internal oil tray. Plus 3 maintenance openings (on all sides) 5: Keypad and stepless adjustment 6: 150° swivelling adapter storage 7+8: Measuring based on the snap gauge principle for diameters up to 100 mm

Tool presetting

VIO – absolutely reliable and flexible.

The VIO series is compatible with the most specific requirements. This version with a manual operating concept is synonymous with high quality components and intuitive operation. The VIO boasts decisive advantages such as large traverses on the X- and Z-axes and powerful image processing.

08



VIO manual

Manual operation

- + Flexible control console
- + High quality components
- + Powerful Microvision software



VIO *linear*

Fully automatic with manual options

- + Intuitive input of automatic measurement cycles
- + Wear-free and maintenance-free linear motors
- + Flexible control console

VIO series – the premium solutions

- + Length and diameter up to 1,000 mm
- + From manual to fully automatic
- + FEM-optimised and thermally stable cast iron construction



09

VIO *linear* toolshrink

Combined solution for high-precision shrinking and measuring

- + Minimum footprint
- + Optimal shrinking results
- + Rapid, more precise axial positioning
- + Automatic monitoring of shrinking parameters

Tool presetting

• VIO *linear*

Microvision software

Test and measurement equipment

Service

Floor plans / technical data

Tool presetting

VIO *linear* – the premium solution for highest precision and speed.

Optimise process reliability in your production with fully automatic measurement processes. The holistic device concept allows for integration in all production processes, including existing ones.

Worldwide leaders through:

Fully automatic measuring cycles

for maximum operating convenience

High quality components

Heidenhain, Bosch Rexroth

Linear drives for speed

and highly accurate positioning

Operating panel

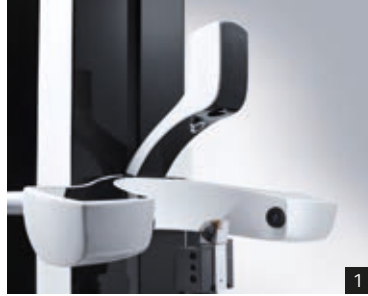
flexible and user-friendly

High power software

Microvision

linear **DRIVE**





1: Second camera for presetting the centre of rotation (optional)
2 + 3: Fully automatic axis drive through modern linear technology

Maximum stability and precision

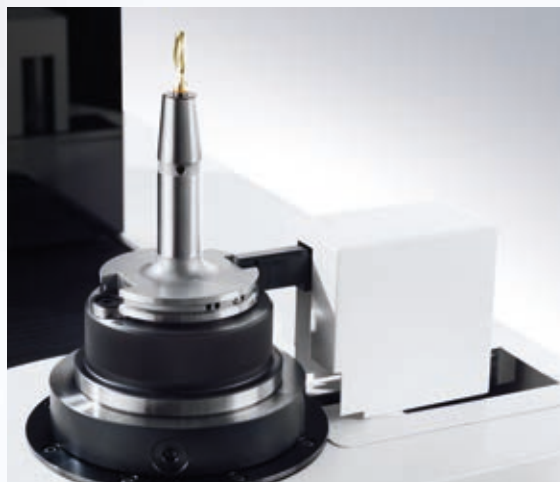
The FEM-optimised, thermally stable cast iron construction of the *VIO linear* series ensures accurate measuring results and equipment longevity. In addition, highly dynamic, wear-free linear drives ensure accurate long-term quality. The parallel drive and guidance system ensures optimal distribution of forces and guarantees measurement repeatability of $\pm 2 \mu\text{m}$.

Highlights

- + Low distortion even under the maximum permissible load thanks to its high installed weight
- + FEM-optimised and thermally stable cast iron construction
- + Maximum tool weight 160 kg

RFID – data carrier system

- + Customer-specific data storage
- + Measurement processes with integrated data retrieval and storage
- + Integration of all popular RFID systems
- + The read/write head can be positioned automatically and manually for all popular tool holder systems



Automatic positioning of the read/write head



Manual positioning of the read/write head

Tool presetting

• VIO *linear* toolshrink

Microvision software

Test and measurement equipment

Service

Floor plans / technical data

Tool presetting

VIO *linear* toolshrink – measurement presetting and shrinking of tools.

The VIO *linear* toolshrink also ticks all the boxes when it comes to using sister tools and multi-spindle machines. The VIO *linear* toolshrink also saves time over conventional equipment with its built-in shrinking unit. Tools are shrunk and then measured in a single process. The linear drives ensure extremely fast, precise positioning of the measurement and shrinking axes. The latest inductor technology guarantees improved process reliability.

12



linear **II DRIVE**



Fully automatic inductor unit as standard

- + Motorised adjustable diameter – even with multiple diameters in one process
- + Motorised inductor axis, precise positioning with high-quality length measurement systems



1: Easy access to all components 2: Optimal process – shrinking and presetting in one operation

Highlights

- + New design for enhanced operating convenience
- + Optimal shrinking results regardless of the tool holder manufacturer
- + Rapid and precise axial positioning with the linear drives
- + Protection of the inductor unit with motorised positioning for the measurement systems
- + Accessory selection is easier than ever before using optical display and selection
- + Energy saving: Automatic activation and deactivation of the fume extraction system and coolant unit
- + Automatic monitoring of shrinking parameters
- + Automated and self-teaching parameter adjustment

Technical data

- + **Maximum tool length:** 700 mm
- + **Shrink chuck temperature:** maximum 350 °C
- + **Heat-up time:** approx. 4 seconds
- + **Tools:** HM and HSS of \varnothing 3–32 mm
- + **Induction shrinking power:** 13 / 20 kVA
- + **Cool-down times:** 30–90 seconds

Shrinking: Dynamic with presetting adapter or counterbored

Whether it is the automotive industry or tool making, almost every production environment benefits from tools which can be shrunk to length exactly. The VIO *linear* toolshrink offers a unique solution for higher precision in production.

Your benefits

- + Better concentricity and less imbalance
- + Optimal for series production with sister tools
- + Fully automatic coil as standard
- + Exact shrinking to the specified length (tolerance <10 μ m)

Adapters and spindles for all requirements and applications.

Precise, high-quality adapters and spindles are important elements for precise tool presetting. We have an extraordinarily wide range in order that you can generate the results you want quickly and easily. We will gladly provide consultation regarding your individual requirements and applications.

Adapter // examples



1: HSK 63 adapter with integrated clamping 2: VDI 40 adapter with manual clamping 3: Capto adapter with integrated manual clamping system

We offer you the solution for every situation, from a standard tool holder to customer-specific special tool holders. You benefit from our experience over many years in the area of special tool design.

Spindles // examples



Universal clamping system
1: ISS spindle 2: Attachment holder (SK, HSK, Capto, VDI) 3: Complete system

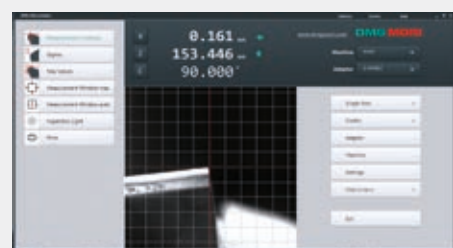
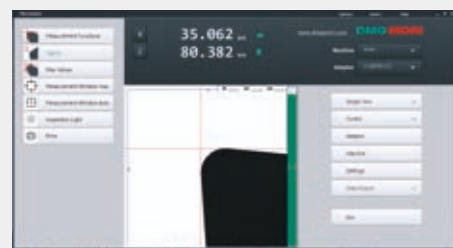
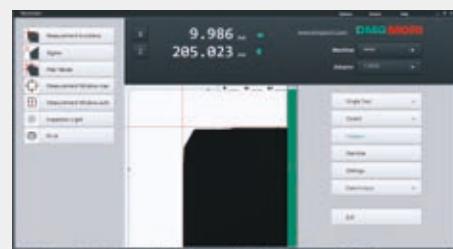
Our offer: Universal clamping system, which clamps the tools precisely and reliably independent of the tool holders geometry. Also attachment holder for all common tool holder systems on the market.

Microvision – easy and intuitive.

Microvision software very quickly allows users to generate lots of time-saving potential during job preparation. It does so by quickly, precisely and independently measuring and setting tools. Modern image processing ensures that the tools are quickly and accurately measured and in turn guarantees the highest quality in your production processes. Complex tools can be measured within the shortest period of time with the most modern measuring techniques.

Highlights

- + Quick and precise measuring results thanks to intuitive operation
- + Accurate measurement values for complex and helical cutters with the precise focus window
- + User administration and access privileges
- + Display currently in 16:9 format
- + Cross hair fixed / floating with automatic measurement lines and automatic contour evaluation
- + One design for the software of all equipment classes
- + Windows 7 Professional or Ultimate, whatever you need



Tool presetting
Microvision software
Test and measurement equipment
Service
Floor plans / technical data

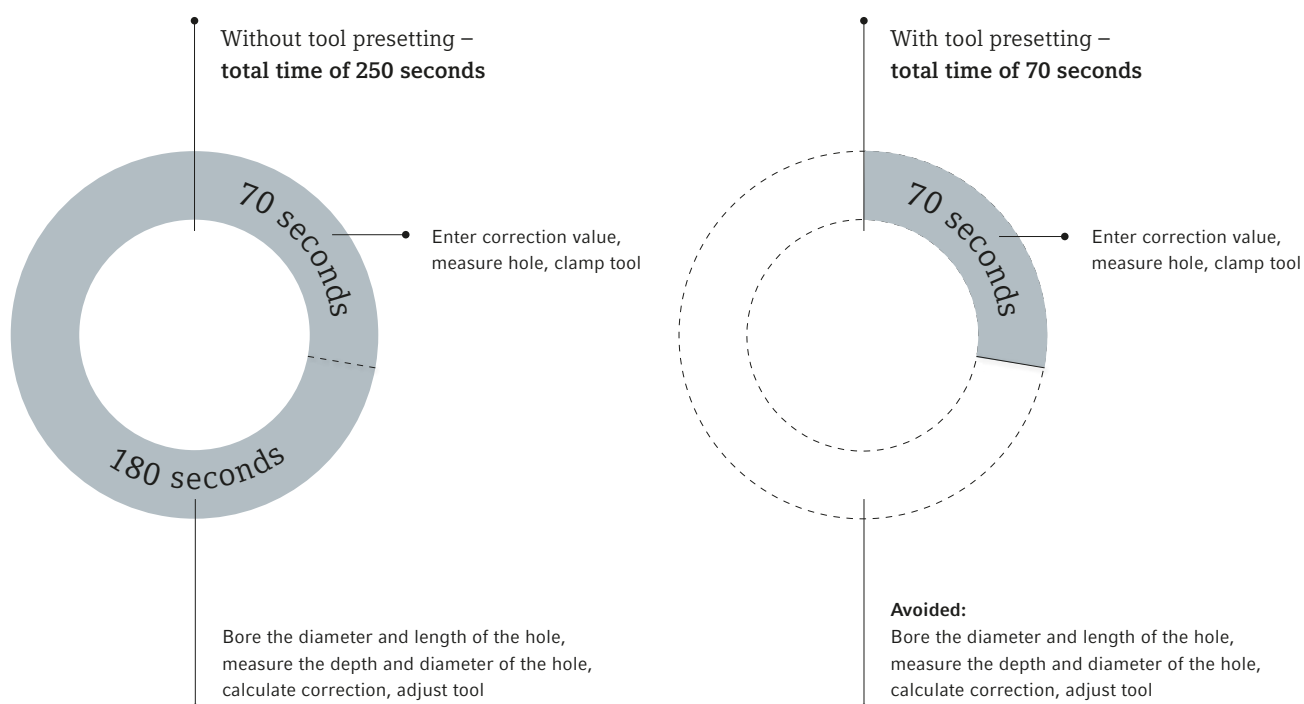
External tool presetting – your benefits

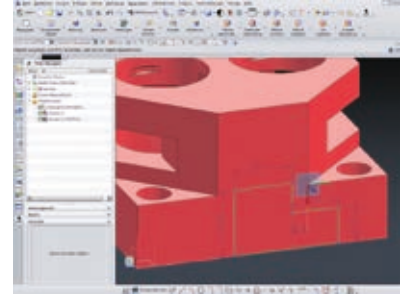
Save time and money, improve workpiece quality.

The efficient tool presetting equipment from DMG MORI Microset optimises your machining processes from the ground up. Improve your tool service lives, generate better surface finishes and boost overall process reliability in your production.

- + Minimise rejects and tool costs
- + Minimise the idle time of your machines
- + Improve your tool service lives
- + Increase process reliability in your production
- + Generate consistent quality in your products

Save up to 70 % time!





Data exchange

Post-processor / Ethernet / USB

Post-processed data is transferred to the relevant data exchange drive either via the network or via USB.

Bidirectional interface

All equipment can provide tool data to almost any software (tool management, databases, CAD / CAM) via a bidirectional interface – irrespective of whether it is a standard solution or a customised solution.

Tool management

Modern data formats (XML and others) allow smooth transfer of your CAD / CAM data.



Data transfer to the machine – for absolute process safety.

Post processor and bidirectional interface

DMG MORI Microset tool presetting devices are compatible with machine tools from all manufacturers. The measured tool data are quickly transferred straight to the machine tool. Control systems from SIEMENS, Heidenhain, MAPPS and many others can be connected by USB data storage, Ethernet LAN or RS232.

Shrinking and balancing equipment

Ideal auxiliary equipment for tool presetting.

As a fitting supplement to tool presetting we can provide high-quality shrinking and balancing equipment. Both the VIO tool *dynamic* and the Power Clamp boast innovation, ease of operation and quality.



Power Clamp – shrinking equipment

- + High precision tool clamping for all applications including drilling, finishing or roughing
- + Process-safe shrink grip and shrink release of TCT and HSS tools from 3 to 32 mm in diameter in record times of less than 1 minute
- + Fast, precise and efficient tool change at the push of a button
- + Highest rotational accuracy with simplest operation

Equipment and technical data

- + With standard inductor or innovative **next-generation** coil
- + Turntable with 3 stations
- + Integrated contact cooling
- + Output: 13 kW
- + Connection: 3 × 400–480 V, 16 A
- + Tools: HM and HSS from 3 to 32 mm



VIO tool *dynamic* – Balancing equipment

- + Protection of the machine tool from undue vibration and forces
- + Prolongs the service life of spindle and tools
- + Higher surface quality of the workpiece
- + Guarantees safe processes without downtime of your machine tool

Measuring ranges

- + Maximum tool length: 700 mm
- + Maximum tool diameter 380 / 425 mm



Highlights

- + Process-oriented inspection of all workpieces in the production environment
- + Can be used individually as a flexible (programmable) gauge
- + Temperature fluctuations are compensated
- + Processes can be logged and archived
- + Comparison uncertainty of 4 µm
- + Scanning SP25M measuring probe system including 6-position changer
- + Maintenance-free test equipment including hardware and software
- + Optional: Test plan converter, calibration data converter, qs-STAT output module

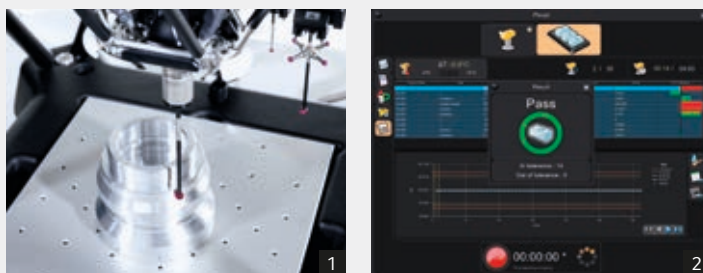
Test and measuring equipment – Equator 300

Perfect inspection of your workpieces.

This intelligent test equipment can be programmed individually and used for inspecting parts up to a maximum of X = 300 mm, Y = 300 mm, Z = 150 mm. Components from production can be tested immediately and directly by the operator under temperature-controlled conditions. With the Equator system you can guarantee your customers 100 % inspection including a test report!

Equator 300

The following tolerances can be inspected with the Equator 300 in accordance with DIN EN ISO 1101:



The Equator 300 compares finished parts to a master which was previously qualified on coordinate measuring equipment. Parallel kinematics offers a high degree of repeatability and operates without backlash.

1: The automatic stylus changer system allows automatic changing of styli without compromising repeatability.

2: Simple operation of the software through a graphical user interface.

- Straightness tolerance
- ▭ Flatness tolerance
- Roundness tolerance
- ⊘ Cylindricity tolerance
- // Parallelism tolerance*
- ⊥ Perpendicularity tolerance*
- ∠ Gradient tolerance*
- ⊙ Position tolerance, e.g. of a point
- ⊙ Coaxial tolerance of an axis
- ↗ Concentricity tolerance
- ↗ Axial run-out tolerance

* e.g. in relation to a reference plane

Service

Your all-round service over the entire life cycle.

Support with all process steps to achieve maximum economic efficiency and quality in production through precise tool presetting. At your request we will analyse your individual production environment in order to optimise processes and will professionally commission your tool presetting equipment. In addition we offer you individual financing packages, courses, training options as well as service and maintenance after commissioning, tailored exactly to your requirements.



Consultation

1: Analysis of workflows, special measuring tasks. Live presentation and consultation regarding financing.

Presetting

2: Testing of measuring accuracy and geometry, set-up of data transfer. Training as required.

After-sales

3: On-site service, original spare parts, maintenance, calibration, maintenance packages, laser calibration, geometry measurement.

Maintenance and service

Optimal care of your presetting equipment by booking a maintenance call or via one of our maintenance packages guarantees you maximum availability in your production process, cost effectively preventing the risk of disruption.

Your benefits

- + Optimal timing and cost planning
- + Preventive avoidance of repair costs
- + Longer service life of equipment
- + Optimally coordinated inspection
- + Price advantage for spare parts



24/7 Service Hotline

Available to you around the clock. Our service experts are available by phone 24 hours a day, 7 days a week. If problems arise, call us!

21

Training

Increased efficiency through targeted learning of proper operation of our presetting equipment. We offer a multitude of training packages on various topics by qualified technical staff on our premises.

Your benefits

- + Practical courses on specific presetting equipment
- + Flexible course structure for your individual requirements
- + High degree of learning success due to small groups

Repair service

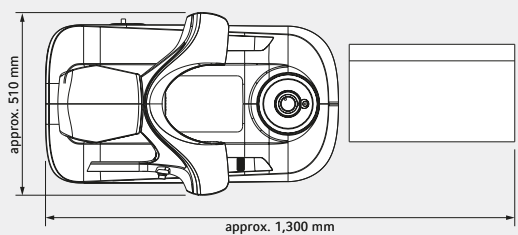
Our qualified technicians are available for service or repair assignments, quickly and without fuss. You can also send your equipment directly to our factory in order to avoid downtime. We will immediately provide you with an exchange unit.

Your benefits

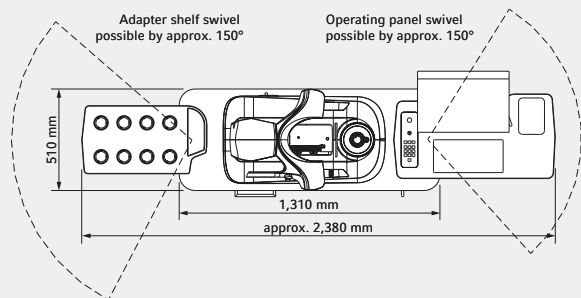
- + Fast response times
- + Economical
- + Original, top quality spare parts (also for older equipment)

Floor plans / technical data

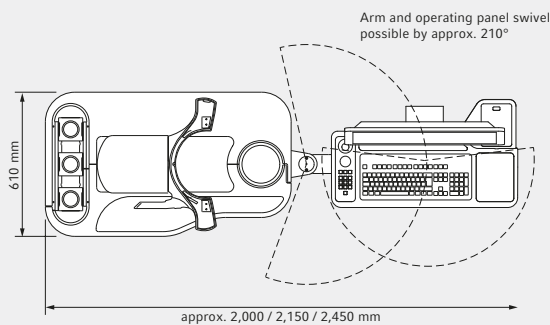
Working area UNO as bench-top equipment



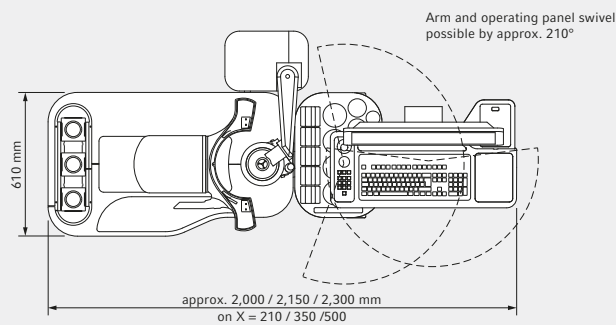
Working area UNO with useful system cabinet



Working area VIO, VIO linear



Working area VIO linear toolshrink



		UNO	VIO	VIO linear	VIO linear toolshrink
Measurement range					
Maximum tool diameter	mm	400	420 / 700 / 1,000	420 / 700 / 1,000	420 / 700 / 1,000
Max. tool diameter for measuring according to snap gauge principle	mm	100	100	100	100
Maximum tool length in Z axis	mm	400 / 700	500 / 700 / 1,000	500 / 700 / 1,000	500 / 700 / 1,000
Max. tool length shrinking	mm	–	–	–	700
Operation					
Manual		•	•	•	•
Auto focus (motorised C axis)		◦	◦	–	–
Automatic drive (motorised X, Z and C axis)		◦	–	•	•
Manual fine adjustment		•	•	–	–
Motorised fine adjustment		–	–	•	•
Accuracy					
Concentricity at the spindle nose	µm	2	2	2	2
Repeatability	µm	±2	±2	±2	±2
Spindle					
SK 50 high-precision spindle		•	•	•	–
ISS universal spindle		◦	◦	•	•
Vacuum clamping		◦	•	–	–
Mechanical tool clamping		◦	◦	•	•
Spindle brake		◦	•	•	•
Turning tool indexing (e.g. VDI) 4 x 90°		◦	◦	•	•
Centre of rotation measurement equipment					
Dial gauge		◦	–	–	–
camera		◦	◦	◦	◦
RFID chip system					
Manual		◦	◦	◦	◦
Automatic		–	–	◦	◦
Other options					
Incident light / cutter inspection		•	•	•	•
Useful system cabinet		◦	•	•	•
Adapter shelf		◦	◦	◦	◦
Label printer		◦	◦	◦	◦
47 cm (18.5") screen		•	–	–	–
54 cm (22") screen		◦	•	–	–
56 cm (23") screen		◦	◦	•	•
68.5 cm (27") screen		–	◦	◦	◦
Touch screen		◦	•	•	•
Release-by-touch		◦	–	–	–
Individual release and clamping of X / Z axis		◦	–	–	–
Linear drives		–	–	•	•
Magnetic board		◦	–	–	–
Software					
Available software – image processing		Microvision	Microvision	Microvision	Microvision

• Standard, ◦ optional, – not available

Headquarters

Germany:

DMG MORI Deutschland

Riedwiesenstraße 19
D-71229 Leonberg
Tel.: +49 (0) 71 52 / 90 90 - 0
Fax: +49 (0) 71 52 / 90 90 - 22 44

Europe:

DMG MORI Europe

Lagerstrasse 14
CH-8600 Dübendorf
Tel.: +41 (0) 44 / 8 01 12 - 40
Fax: +41 (0) 44 / 8 01 12 - 31

Asia:

DMG MORI Asia

3 Tuas Link 1
Singapore 638584
Tel.: +65 66 60 66 88
Fax: +65 66 60 66 99

America:

DMG MORI America

2400 Huntington Blvd.
Hoffman Estates IL 60192
Tel.: +1 (847) 593 - 5400
Fax: +1 (847) 593 - 5433

Europe

DMG MORI Austria

Oberes Ried 11 · A-6833 Klaus
Tel.: +43 (0) 55 23 / 6 91 41 - 0
Fax: +43 (0) 55 23 / 6 91 41 - 100
Service Hotline: +43 (0) 1 795 76 109

_ Stockerau

Josef Jessernigg-Str. 16 · A-2000 Stockerau
Tel.: +43 (0) 55 23 / 6 91 41 - 0
Fax: +43 (0) 55 23 / 6 91 41 - 100

DMG MORI Benelux

_ Nederland

Wageningenlaan 48
NL-3903 LA Veenendaal
Tel.: +31 (0) 318 - 55 76 - 11
Fax: +31 (0) 318 - 52 44 - 29
Service Turning: +31 (0) 318 - 55 76 - 33
Service Milling: +31 (0) 318 - 55 76 - 34
Service Fax: +31 (0) 318 - 55 76 - 10

_ Belgium

Hermesstraat 4B · B-1930 Zaventem
Tel.: +32 (0) 2 / 7 12 10 - 90
Fax: +32 (0) 2 / 7 12 10 - 99
Service: +32 (0) 2 / 7 12 10 - 94

DMG MORI Czech

Kaštanová 8 · CZ-620 00 Brno
Tel.: +420 545 426 311
Fax: +420 545 426 310
Service: +420 545 426 320
Service Fax: +420 545 426 325

_ Planá

Chýnovská 535 · CZ-39111 Planá nad Lužnicí
Tel.: +420 381 406 914
Fax: +420 381 406 915

_ Slovensko

Brnianska 2 · SK-91105 Trenčín
Tel.: +421 326 494 824

DMG MORI France

Parc du Moulin · 1, Rue du Noyer
B.P. 19326 Roissy-en-France
F-95705 Roissy CDG Cedex
Tel.: +33 (0) 1 / 39 94 68 00
Fax: +33 (0) 1 / 39 94 68 58

_ Lyon

Parc des Lumières
1205, Rue Nicéphore Niepce
F-69800 Saint-Priest
Tel.: +33 (0) 4 / 78 90 95 95
Fax: +33 (0) 4 / 78 90 60 00

_ Toulouse

Futuropolis Bat. 2 · 2, Rue Maryse Hilsz
F-31500 Toulouse
Tel.: +33 (0) 5 / 34 25 29 95
Fax: +33 (0) 5 / 61 20 89 19

_ Haute-Savoie

Espace Scionzier
520 avenue des Lacs · F-74950 Scionzier
Tel.: +33 (0) 4 / 50 96 41 62
Fax: +33 (0) 4 / 50 96 41 30

DMG MORI Hungary

Vegyész u. 17-25 · B. Building
H-1116 Budapest
Tel.: +36 1 430 16 14
Fax: +36 1 430 16 15
Service Hotline: +36 1 777 90 57

DMG MORI Ibérica

Pol. Ind. Els Pinetons
Avda. Torre Mateu 2-8 · Nave 1
E-08291 Ripollet · Barcelona
Tel.: +34 93 586 30 86
Fax: +34 93 586 30 91

_ Madrid

C / Alcañiz 23
E-28042 Madrid
Tel.: +34 91 66 99 865
Fax: +34 91 66 93 834

_ San Sebastián

Edificio Igaraburu
Pokopandegi, 11 Oficina 014
E-20018 San Sebastián
Tel.: +34 943 100 233
Fax: +34 943 226 929

DMG MORI Italia

Via G. Donizetti 138
I-24030 Brembate di Sopra (BG)
Tel.: +39 035 62 28 201
Fax: +39 035 62 28 210
Service Fax: +39 035 62 28 250

_ Milano

Via Riccardo Lombardi 10
I-20153 Milano (MI)
Tel.: +39 02 48 94 921
Fax: +39 02 48 91 44 48

_ Padova

Via E. Fermi 7
I-35030 Veggiano (PD)
Tel.: +39 049 900 66 11
Fax: +39 049 900 66 99

DMG MORI Middle East

Jebel Ali Free Zone · JAFZA Towers 18
Floor 24 · Office 3
PO Box 262 607 · Dubai, U.A.E.
Tel.: +971-4-88 65 740
Fax: +971-4-88 65 741

DMG MORI Polska

ul. Fabryczna 7
PL-63-300 Pleszew
Tel.: +48 (0) 62 / 7428 000
Fax: +48 (0) 62 / 7428 114
Service: +48 (0) 62 / 7428 285

DMG MORI Romania

Road Bucuresti
Pitești, DN7, km 110
Platforma IATSA
RO-117715 Pitești · Stefanesti
Tel.: +40 2486 10 408
Fax: +40 2486 10 409

DMG MORI Russia

Nowoholowskaja-Strasse 23/1
RUS-109052 Moscow
Tel.: +7 495 225 49 60
Fax: +7 495 225 49 61

_ Jekaterinburg

ul. Sofi Kowalewskoj 4, litera Z
RUS-620049 Jekaterinburg
Tel.: +7 343 379 04 73
Fax: +7 343 379 04 74

_ St. Petersburg

pr. Obuhovskoy Oborony 271, litera A
RUS-192012 St. Petersburg
Tel.: +7 812 313 80 71
Fax: +7 812 313 80 71

DMG MORI Scandinavia

_ Danmark

Robert Jacobsens Vej 60 · 2.tv
DK-2300 København S
Tel.: +45 70 21 11 11
Fax: +45 49 17 77 00

_ Sverige

EA Rosengrens gata 5
S-421 31 Västra Frölunda
Tel.: +46 31 348 98 00
Fax: +46 31 47 63 51

_ Norge

Bergsli Metallmaskiner AS
Gateadresse: Bedriftsveien 64
N-3735 Skien
Postadresse: Postboks 2553
N-3702 Skien
Tel.: +47 35 50 35 00
Fax: +47 35 50 35 70

_ Finland

Fastems Oy Ab
Tuotekatu 4
FIN-33840 Tampere
Tel.: +358 (0)3 268 5111
Fax: +358 (0)3 268 5000

_ Baltic states

Fastems UAB
Kalvarijos str. 38
LT-46346 Kaunas
Tel.: +370 37 291567
Fax: +370 37 291589

DMG MORI Schweiz

Lagerstrasse 14
CH-8600 Dübendorf
Tel.: +41 (0) 44 / 8 24 48 - 48
Fax: +41 (0) 44 / 8 24 48 - 24
Service: +41 (0) 44 / 8 24 48 - 12
Service Fax: +41 (0) 44 / 8 24 48 - 25

DMG MORI South East Europe

9th km. National Road Thessaloniki –
Moudanion · PO Box: 60233
GR-57001 Thessaloniki
Tel.: +30 2310 47 44 86
Fax: +30 2310 47 44 87

DMG MORI Turkey

Ferhatpaşa Mah. Gazipaşa Cad. NO: 11
TR-34885 Ataşehir · Istanbul
Tel.: +90 216 471 66 36
Fax: +90 216 471 80 30

DMG MORI UK

4030 Siskin Parkway East
Middlemarch Business Park
Coventry CV3 4PE · GB
Tel.: +44 (0) 2476 516 120
Fax: +44 (0) 2476 516 136

DMG MORI Microset GmbH

Gildemeisterstraße 60, D-33689 Bielefeld
Tel.: +49 (0) 5205 / 74-0, Fax: +49 (0) 5205 / 74-4444
info@dmgmori.com, www.dmgmori.com